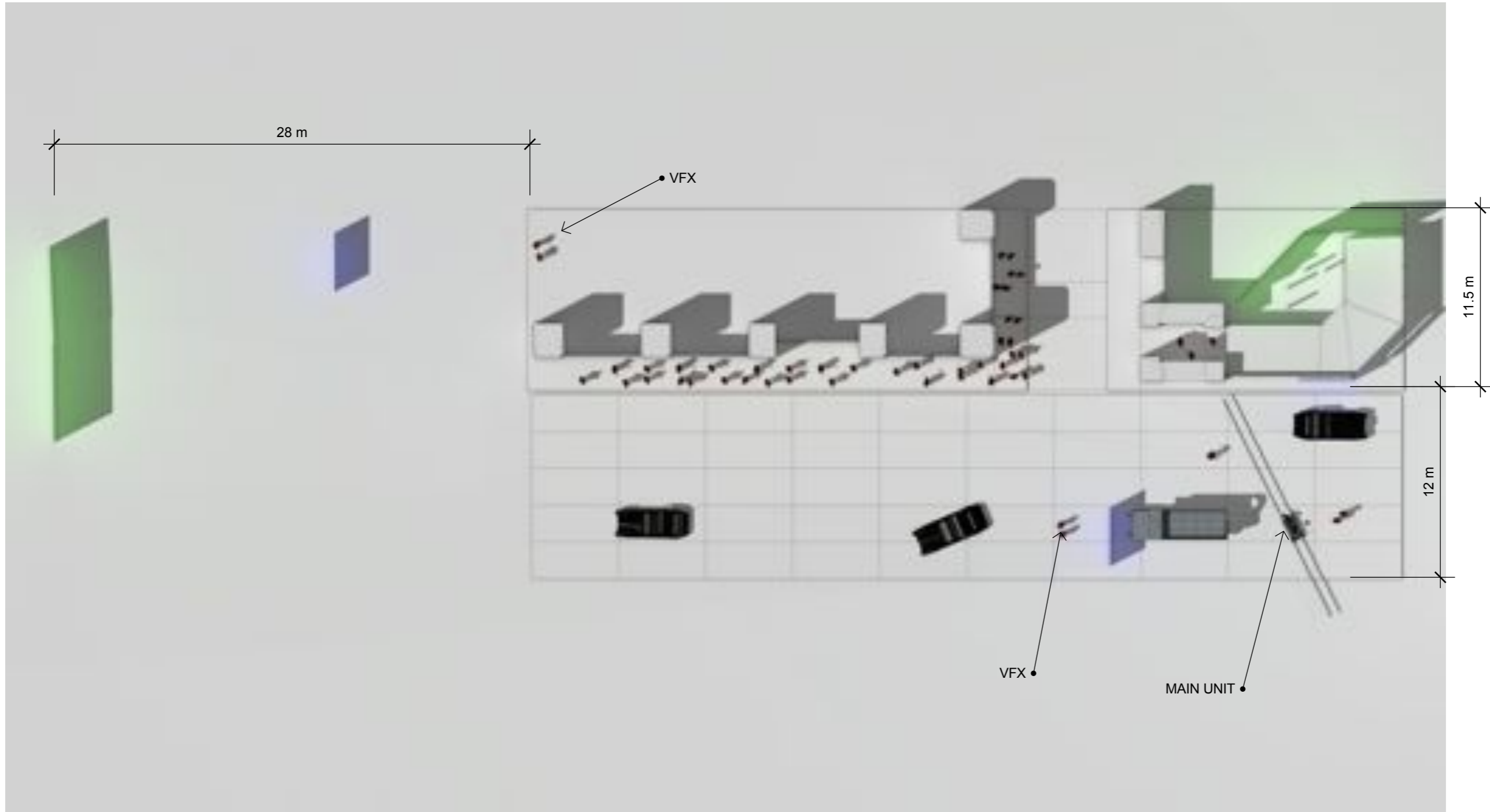


TOP ELEVATION



VFX Supervisor: Justin C Hutchinson-Chatburn
Tel: 07595 465 035
E: justin@paintingpractice.com

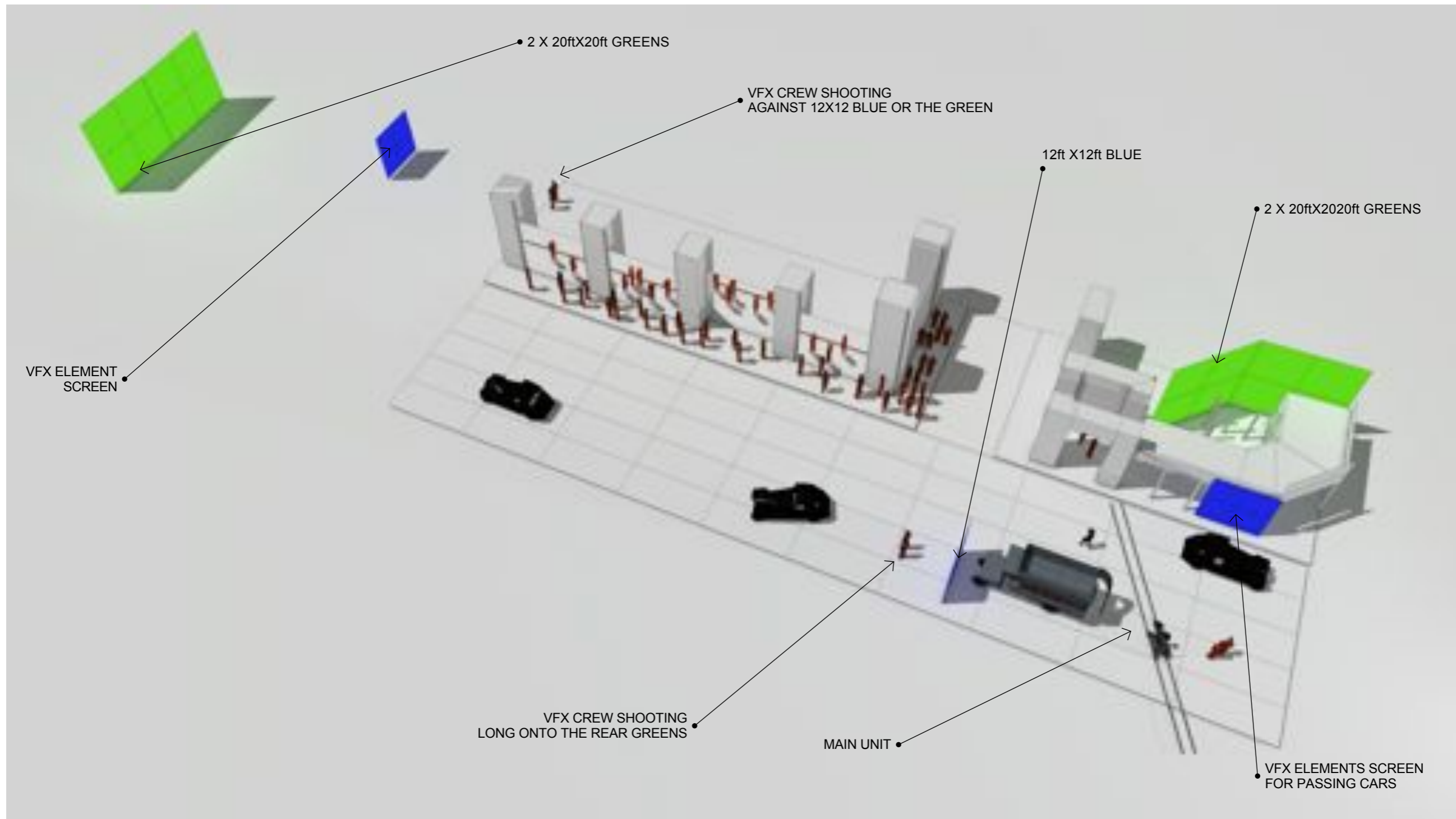
SHOT
V_MS_EP2_46_001
V_MS_EP1_08_001
V_MS_EP1_06_001

Mr. Selfridge
Chatham Exterior Set



OVERALL SET AND GREEN SCREEN PLAN

SHOTS: 2-46 / 1-8 / 1-6



VFX Supervisor: Justin C Hutchinson-Chatburn
Tel: 07595 465 035
E: justin@paintingpractice.com

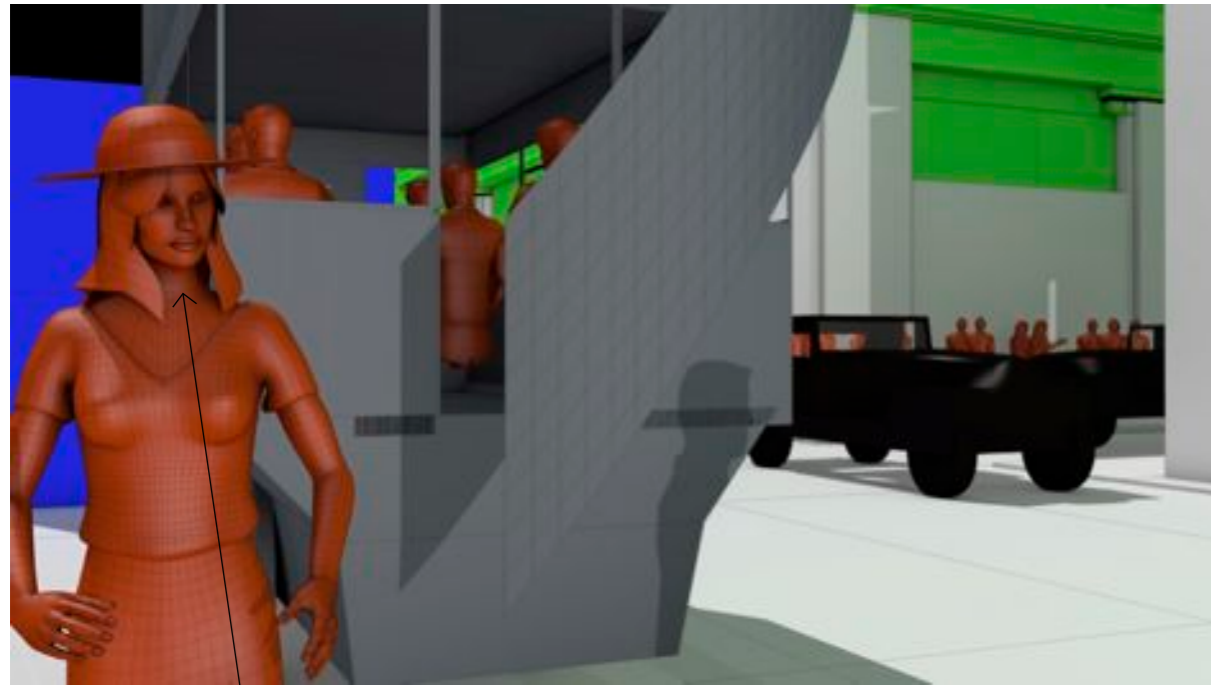
SHOT
V_MS_EP2_46_001
V_MS_EP1_08_001
V_MS_EP1_06_001

Mr. Selfridge
Chatham Exterior Set



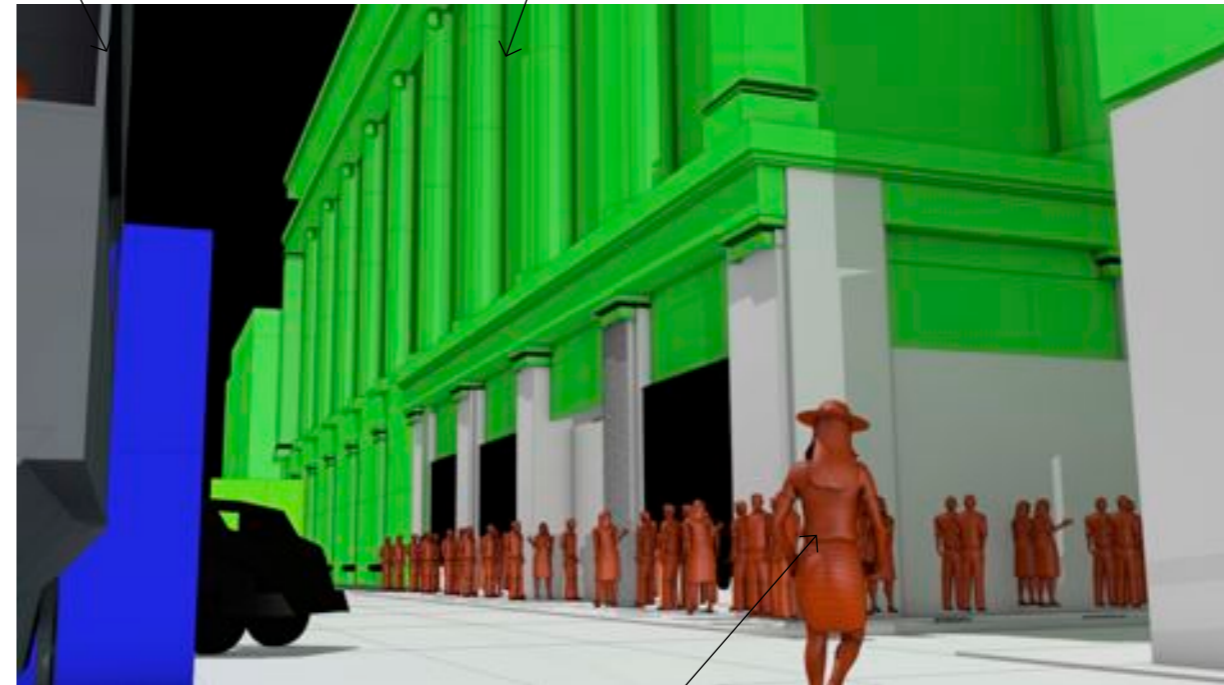
SHOOTING NOTES
SHOT: 2-46

START FRAME



• We reveal a quick glimpse of the opposite side of Oxford street but use extras to cover the lower part of the street.

• Keep the Omnibus in shot to hide the opposite side of the street



END FRAME

• Make sure we shoot Agnes against the set

• Digital Selfridges